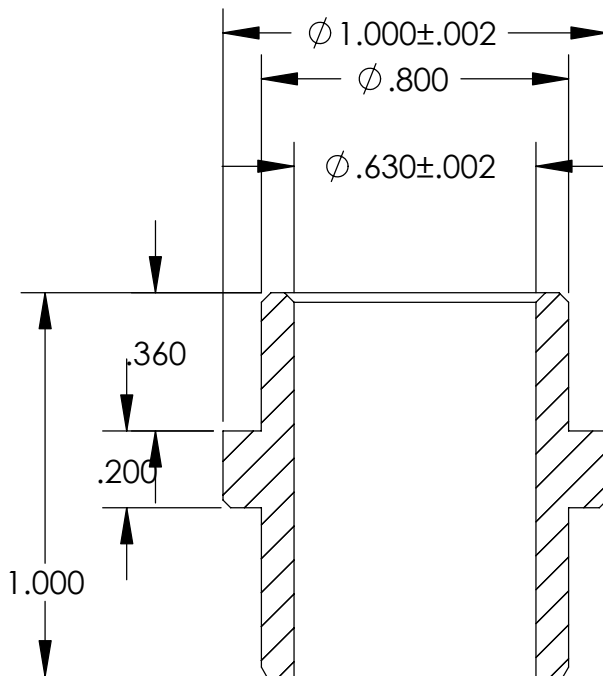
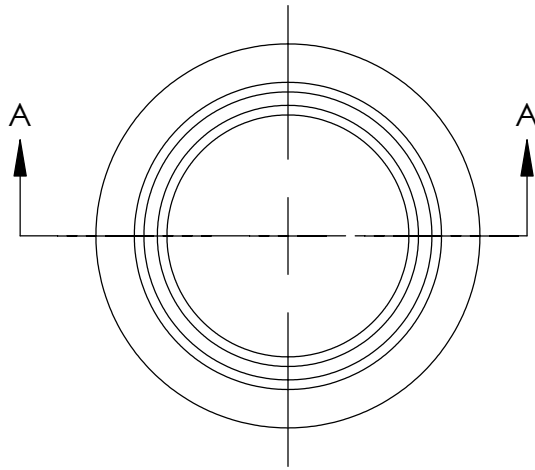
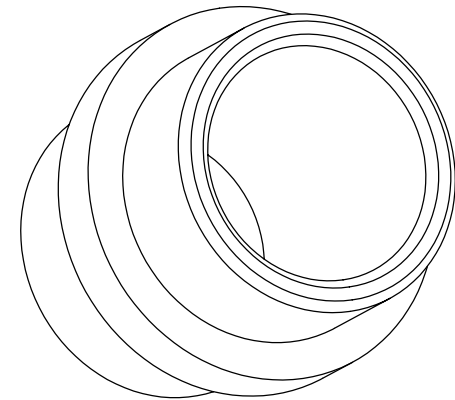


| REVISIONS | | |
|-----------|------------------------|-----------|
| REV | DESCRIPTION | DATE |
| B | CHANGED SIZE OF FLANGE | 6/4/2003 |
| C | OD WAS 1.125" | 6/27/2003 |



SECTION A-A



NOTES:

1. 1.000" DIAMETER TO BE CLOSE SLIP WITH OD ID OF P/N -047.
2. .630" DIAMETER TO BE CLOSE SLIP FIT WITH P/N -085.

UNLESS OTHERWISE SPECIFIED:

DIMENSIONS ARE IN INCHES
DECIMAL TOLERANCES:
.X ±.030 .XX ±.015 .XXX ±.005

ANGULAR TOL: ± 1° SURFACE ROUGHNESS: 63/

INTERNAL AND EXTERNAL SURFACE
INTERSECTIONS SHALL BE UNIFORMLY
FINISHED WITH CHAMFER .005/.010 X 45°
OR RADIUS .005/.010.
CHAMFER ALL THREADED HOLES 110° OF
MAJOR DIAMETER X 45°

MATERIAL: **101 (OFHC) Copper**

FINISH: **NONE**

High Precision Devices

1668 Valtac Lane, Suite C, Boulder, Colorado 80301
Phone: (303) 447-2558 Fax: (303) 447-2548 Web Site: www.hpd-online.com

TITLE:

p02101-153 He weld adapter, upper

CONFIGURATION: **00-Default**

| | | | | |
|----------|------------------------|-----------------------------|----------------------------|----------|
| SIZE | QTY PER ASSM: 1 | SCALE: 2:1 | SHEET 1 OF 1 | REV |
| A | DATE: 5/19/2004 | DRAWN BY: C. Danaher | | C |